

redloft

Step onto the property ladder with Red Loft



Beech Tree Place, Sutton, SM1 1SF

A collection of 1 & 2-bedroom
apartments for Shared Ownership,
close to Sutton train station.



Closest station - Sutton

SOUTH LONDON

COMING IN 2026



The Ellington, Canada Water, SE16 7GG Shared Ownership Private Sale

Launching this spring!

1, 2 & 3-bedroom apartments for
Shared Ownership and private sale with
some homes benefiting from city views
and private balconies.



Closest station - Canada Water

SOUTH LONDON

COMING SOON



Trundleys Road, Lewisham SE8 5NJ

A collection of 1 & 2 bedroom
apartments available through the
Shared Ownership scheme



Closest station - Surrey Quays

SOUTH LONDON

COMING SUMMER 2025



Buckingham Avenue, Perivale, UB6 7RA

A selection of sixteen 1 & 2-bedroom
apartments available to buy through
Shared Ownership located close to
Perivale Underground.



Closest station - Perivale

WEST LONDON

COMING SOON



Ainsworth Court, London, NW10 5BD

Ainsworth Court boasts 1-bedroom,
fourth-floor apartment boasts a
spacious open-plan kitchen/living
area, one light and spacious bedroom,
bathroom and a private balcony with
views of Wembley Stadium.

1-bedroom apartment
£360,000



Closest station - Kensal Green

WEST LONDON

VIEWING AVAILABLE



Potterill Court, Teddington, TW11 9FP

A collection of 6 one-bedroom
London Living Rent apartments in
Teddington. Minimum household
income required is £53,822.91 and
priority must go to those who live and/
or work in the London Borough of
Richmond-upon-Thames.

1-bedroom apartments from
£1,452.44 per month



Closest station - Teddington

WEST LONDON

AVAILABLE END OF MAY



Image of a previous RHP homes



Willow Avenue, Barnes, SW13 0LT

A collection of 4 one-bedroom London Living Rent apartments in Barnes. Minimum household income required is £58,032 and priority must go to those who live and/or work in the London Borough of Richmond-upon-Thames.

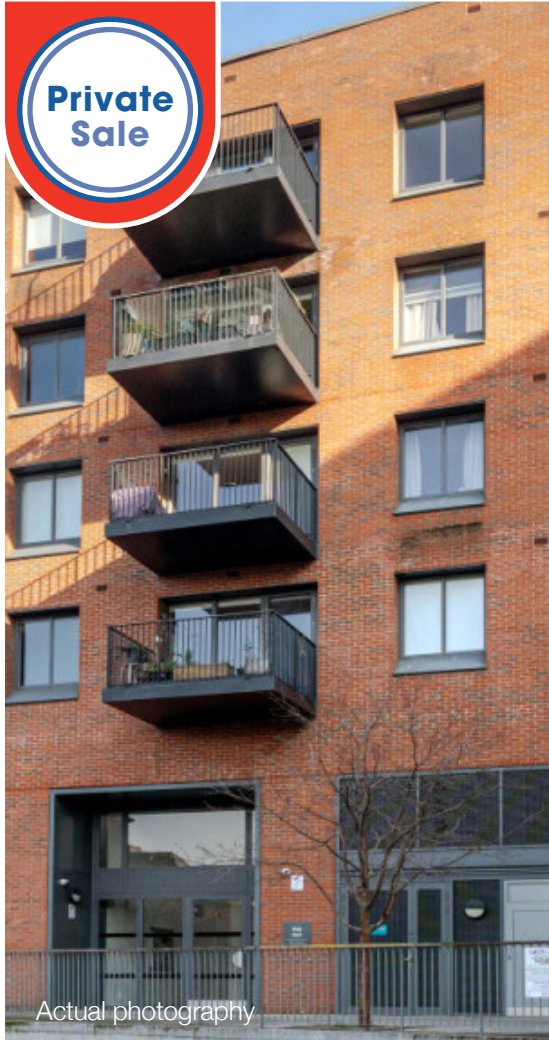
1-bedroom apartments from
£1,563 per month



Closest station - Barnes

WEST LONDON

AVAILABLE END OF MAY



Actual photography



Neap Court, London, E3 3TP

Neap Court boasts 2 great sized bedrooms, a modern and open kitchen/living area with fully integrated appliances, one flush fitted bathroom, and a private balcony with canal views.

2-bedroom apartment
£425,000



Closest station - Bromley-by-Bow

EAST LONDON

VIEWING AVAILABLE



Actual photography



Oysterman Place, Barking, IG11 7WZ

Brand new 1, 2 & 3-bedroom apartments in Barking for sale with Shared Ownership.



Closest station - Barking

EAST LONDON

LAUNCHING
SUMMER 2025



Computer generated image



Quartoria, Albert Road, Barnet, EN2 9FH

22 beautifully designed 1, 2, & 3-bedroom Shared Ownership apartments with open-plan living, private balconies or terraces, and off-street or undercroft parking. Ideally located near local amenities



Closest station - New Barnet

NORTH LONDON

LAUNCHING
SPRING 2025



Actual photography



Montclair Court, London, N12 7DY

A ground-floor 2-bedroom apartment with open plan kitchen/living area with integrated appliances, modern bathroom, communal gardens and resident parking.

2-bedroom apartment **£425,000**



Closest station - Woodside Park

NORTH LONDON

VIEWING AVAILABLE



Actual photography



Merle Court, London, NW6 5HH

Discover your ideal home with our collection of four one-bedroom apartments available through Shared Ownership. Located on the 6th or 7th floor and only a 7-minute walk to Queens Park underground station.

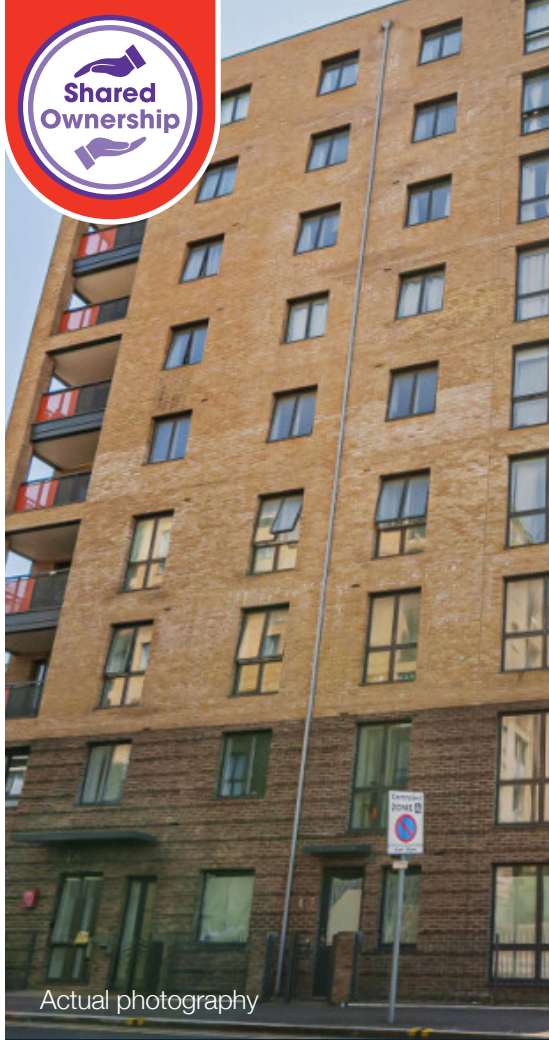
1-bedroom apartment prices from
£112,500 for a 25% share



Closest station - Queens Park

NORTH LONDON

AVAILABLE TO MOVE IN



Actual photography



Taylor Point, Watford, WD17 1DF

NEWLY REFURBISHED

2-bedroom apartments are now available through Shared Ownership!

Located only a 7-minute walk to Watford Junction Station which is serviced by the London Overground, Avanti West Coast and West Midlands Railway.

2-bedroom apartment prices from
£100,500 for a 30% share



Closest station - Watford Junction

HERTFORDSHIRE

LAST PROPERTY REMAINS



Actual photography



Old Saw Mill, Buckinghamshire, HP6 6FJ

Old Saw Mill is a 79sqm 3-bedroom semi-detached house located in Amersham. Located a 4-minute drive from Chalfont & Latimer station meaning you can find yourself in London Marylebone in just over 30 minutes or Kings Cross within 50 minutes on the Metropolitan line.

3-bedroom house
£550,000



Closest station - Chalfont & Latimer

BUCKINGHAMSHIRE

VIEWING AVAILABLE



Actual photography



Walnut Close, Cambridge, CB25 9GB

A well-presented three-bedroom link detached family home in the popular village of Landbeach. Situated on a quiet cul-de-sac, the property benefits from a double driveway and private garden.

3-bedroom house
£217,500 for a 50% share.

Maximum share available to purchase is 80%.



Closest station - Waterbeach

CAMBRIDGESHIRE

AVAILABLE NOW



Eastfield,
Cambridge, CB4 1SA

A 3-bedroom end terrace house arranged over 2 floors located in Eastfield with a covered car port and excellent travel connections.

3-bedroom house **£117,500** for a 25% share



Closest station - Cambridge North

CAMBRIDGESHIRE

VIEWING AVAILABLE



Bowers Close,
Basildon, SS13 2EP

A development comprising of 31 brand new homes, providing a collection of Shared Ownership homes. Expected completion for Winter 2025



Closest station - Pitsea

ESSEX

COMING WINTER 2025



Henshaw Place,
Ashford, TN27 9DT

2 & 3-bedroom houses overlooking a neighbouring orchard in Egerton, in the heart of the Kent countryside.



Closest station - Pluckley

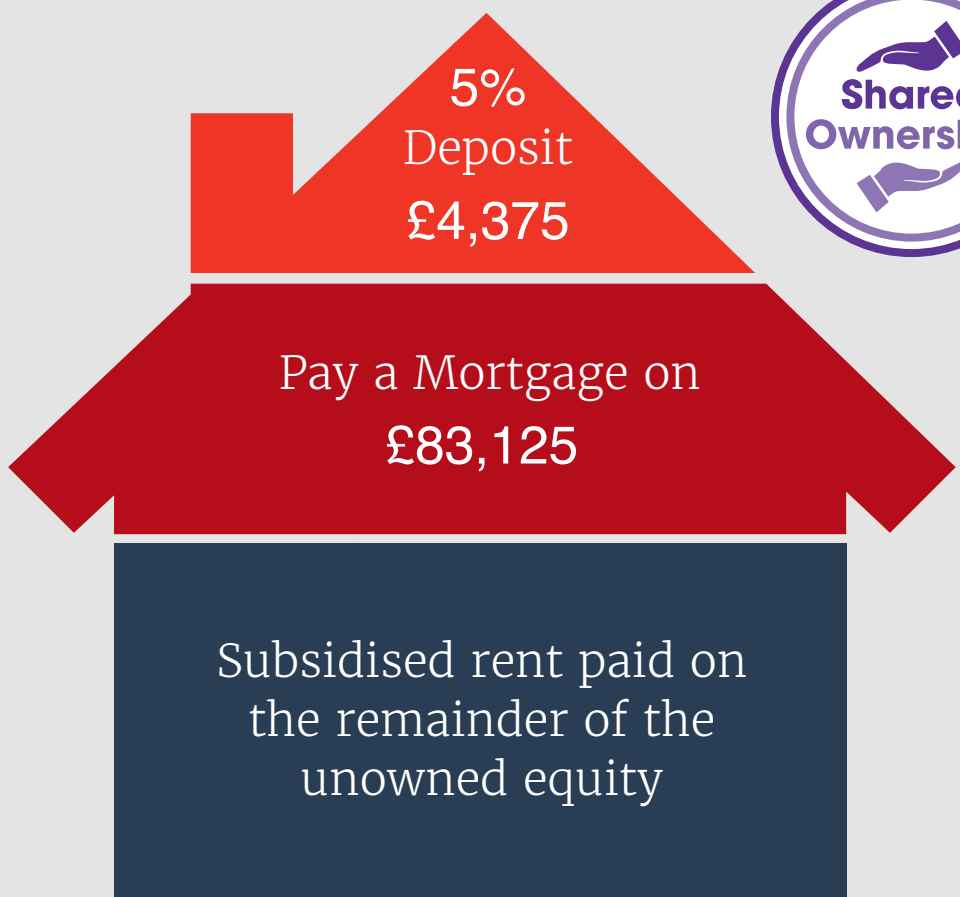
KENT

LAUNCHING
SUMMER 2025

What is
Shared Ownership?

How Shared Ownership Works

Breakdown of a 25% share of a 1-bedroom apartment with a full market value of £350,000



Shared Ownership is an affordable home ownership scheme which makes it easier for first time buyers to get on the property ladder. Buyers purchase a share of a property, anything between 10%-75%, and pay a subsidised rent on the remaining share. As your circumstances change you can purchase more shares in the property (known as staircasing), or you can sell your share and move on to a new home. Shared Ownership has helped thousands of first time buyers onto the property ladder throughout England for over 40 years.

Eligibility for Shared Ownership

- ✓ Outside of London your annual household income must be less than £80,000
- ✓ In London your annual household income must be less than £90,000
- ✓ You should generally be a first time buyer, i.e. you don't already own a home. If you do already own, you must be in the process of selling it
- ✓ You should not be able to afford to buy a home suitable for your housing needs on the open market

What is London Living Rent?

London Living Rent homes are for households who currently rent and want to build up savings to buy a home in the future. This can be either through shared ownership or outright purchase. The homes will be offered on tenancies of a minimum of three years but can be extended to a maximum of 10 years. Tenants will be supported to save and given the option to buy their home on a shared ownership basis during their tenancy. They will also be given extra priority for other shared ownership homes across London.



Eligibility for London Living Rent.

In order to be eligible for a London Living Rent, there are several general criteria you must meet.

- ✓ Be renting in London
- ✓ Have a maximum household income of £67,000
- ✓ Be unable to currently buy a home (including through shared ownership) in your local area

